



Get more Quality, Flexibility and Labor Savings using

# WALL PANELS

#2  
SLOPE 5/8  
CLK  
3050/LB  
3068/W  
1' 5"  
6-1/4"



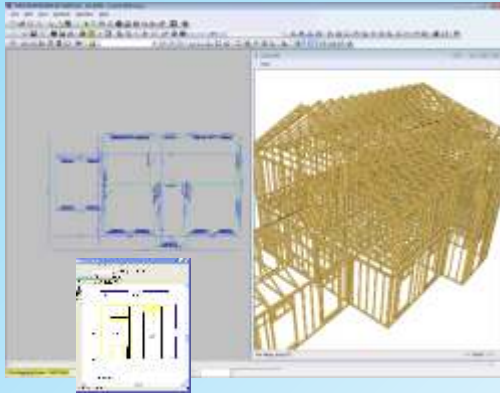
**ITW** Building Components Group





Get more Quality, Flexibility and Labor Savings using

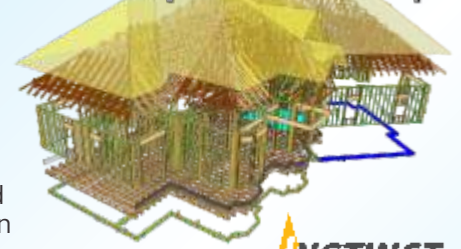
# WALL PANELS



## Layout, Design and Engineering Software

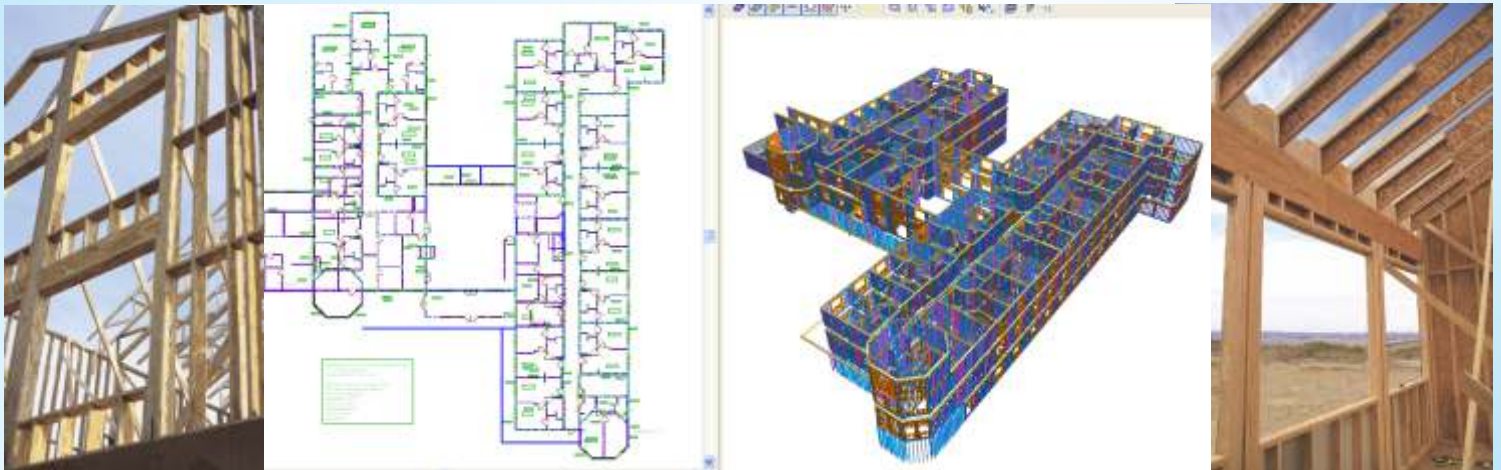
Powerful CAD-based design software from ITW Building Components Group generates traditional plan view layouts, and 3-D graphics that give an accurate picture of a structure from virtually any perspective by showing every component in place. ITW's *Instinct Residential Design System* is cutting edge technology utilizing a BIM-based system that integrates information and functions through a single 3-D model that can be shared by the entire supply chain.

**ITW Building Components Group**



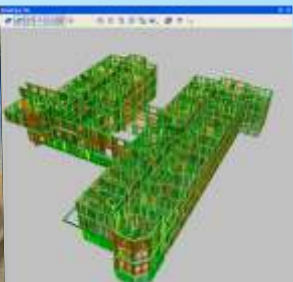
## Wall Panels Save You Money

The dry-in time for a structure using wall panels is significantly shorter than stick framing. This saves money in construction costs. The simplicity of erecting a panelized structure allows for a less experienced construction crew, saving cost of labor and expensive mistakes from field decisions. Far less scrap is generated on a job-site using panelized walls.



## Less Waste and Safe job sites

Because wall panels arrive as a complete system, you'll reduce waste from inaccurately cut lumber. Less waste results in lower cost of dumpster removal. Additionally, the amount of shrinkage, warping and twisting of the material due to weather conditions is greatly reduced. Panelization reduces the amount of lumber being cut on a job site. Thereby, reducing injuries resulting from cutting lumber.



Job Site Look Like This?